

Public Document Pack

PRESENTATION SLIDES

DEVELOPMENT MANAGEMENT COMMITTEE - WEDNESDAY, 13TH SEPTEMBER, 2017

The following presentation slides were used at the Development Management Committee meeting.

Planning Applications (Pages 1 - 34)

This page is intentionally left blank

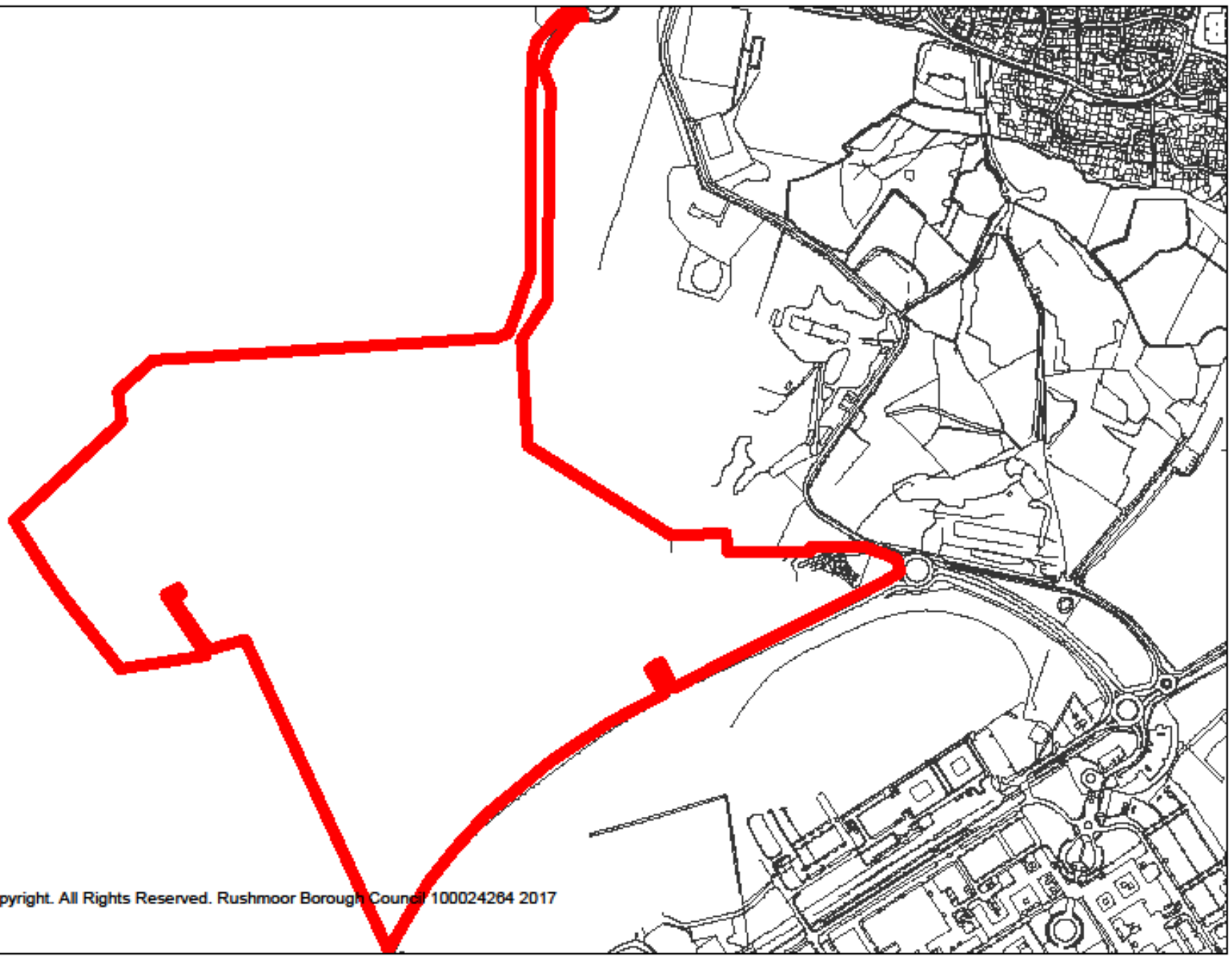
Development Management Committee

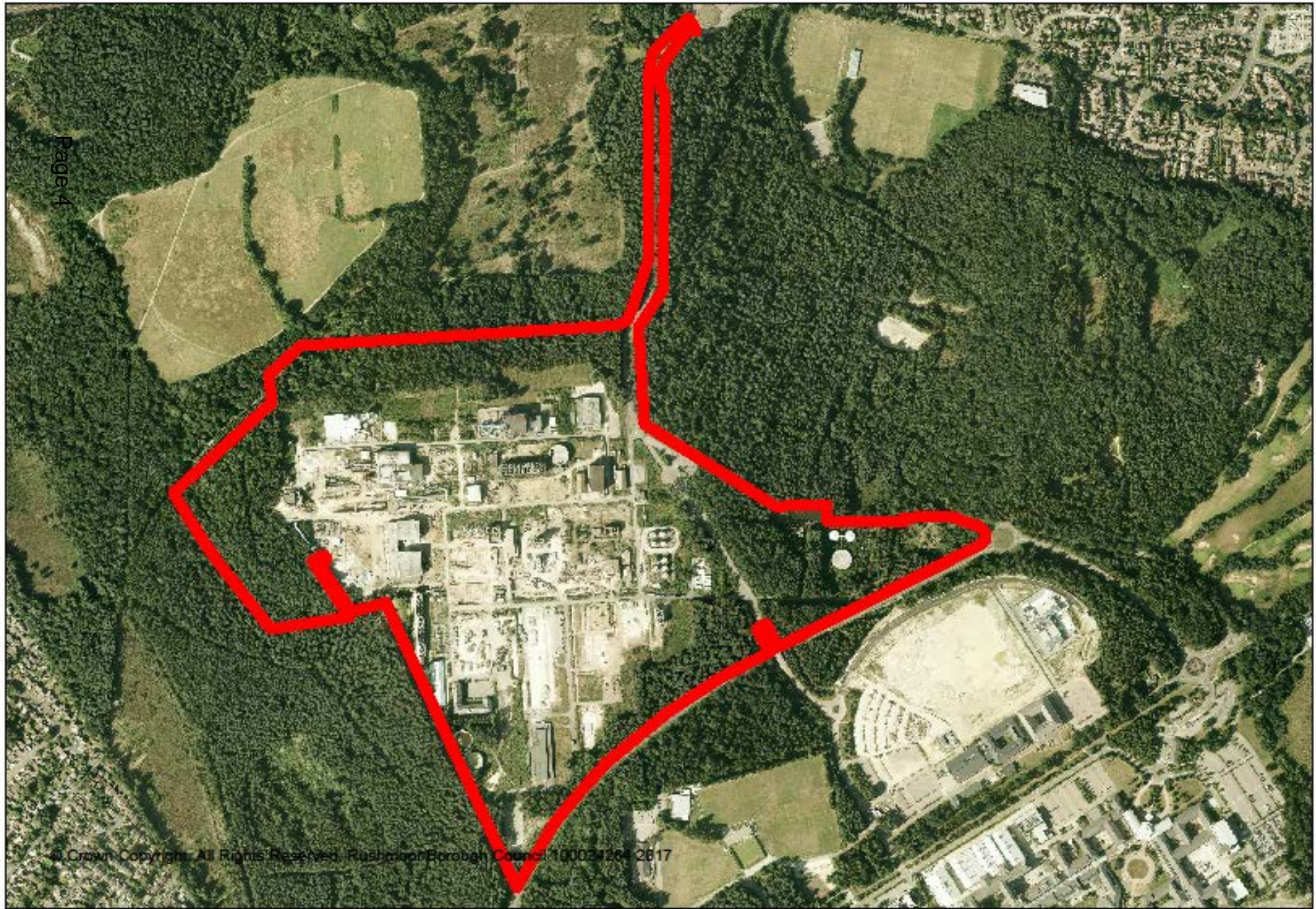
13th September 2017

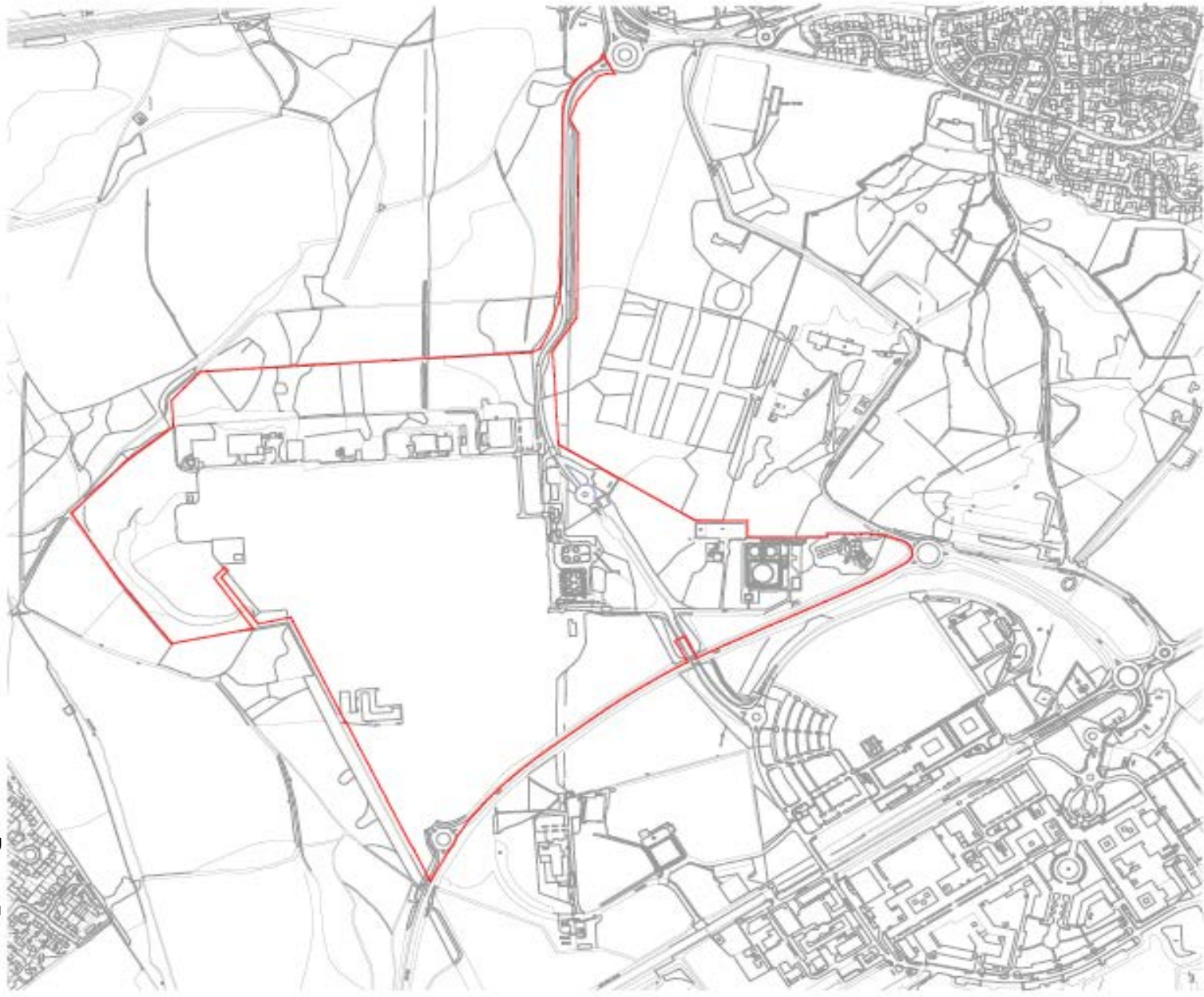
Development Management Committee

Item 6 : 17/00241/ADJ

Hartland Park, Bramshot Lane,
Fleet









St Edward
Designed for life

OMEGA
PLANNING

Omega Planning Limited, Incubated and driven by Hampshire Skills Partnership, High Street, Haslemere, Surrey GU27 0JH
T: 01423 351111 W: www.omegaplanning.co.uk

ST EDWARD

HARTLAND VILLAGE, PHASE 2

ILLUSTRATIVE SITE MASTERPLAN

1:1000 @ A0 APRIL 2017

PLANNING

2511-SK-1005-K



OMEGA

Omega Planning Services Ltd
100, 100A, 100B, 100C, 100D, 100E, 100F, 100G, 100H, 100I, 100J, 100K, 100L, 100M, 100N, 100O, 100P, 100Q, 100R, 100S, 100T, 100U, 100V, 100W, 100X, 100Y, 100Z

By:
ST EDWARD
Site:
HARRINGTON ROAD, L201
Date:
28/05/2017

Scale: 1:1000
Date: 28/05/2017
Scale: 1:1000
Date: 28/05/2017

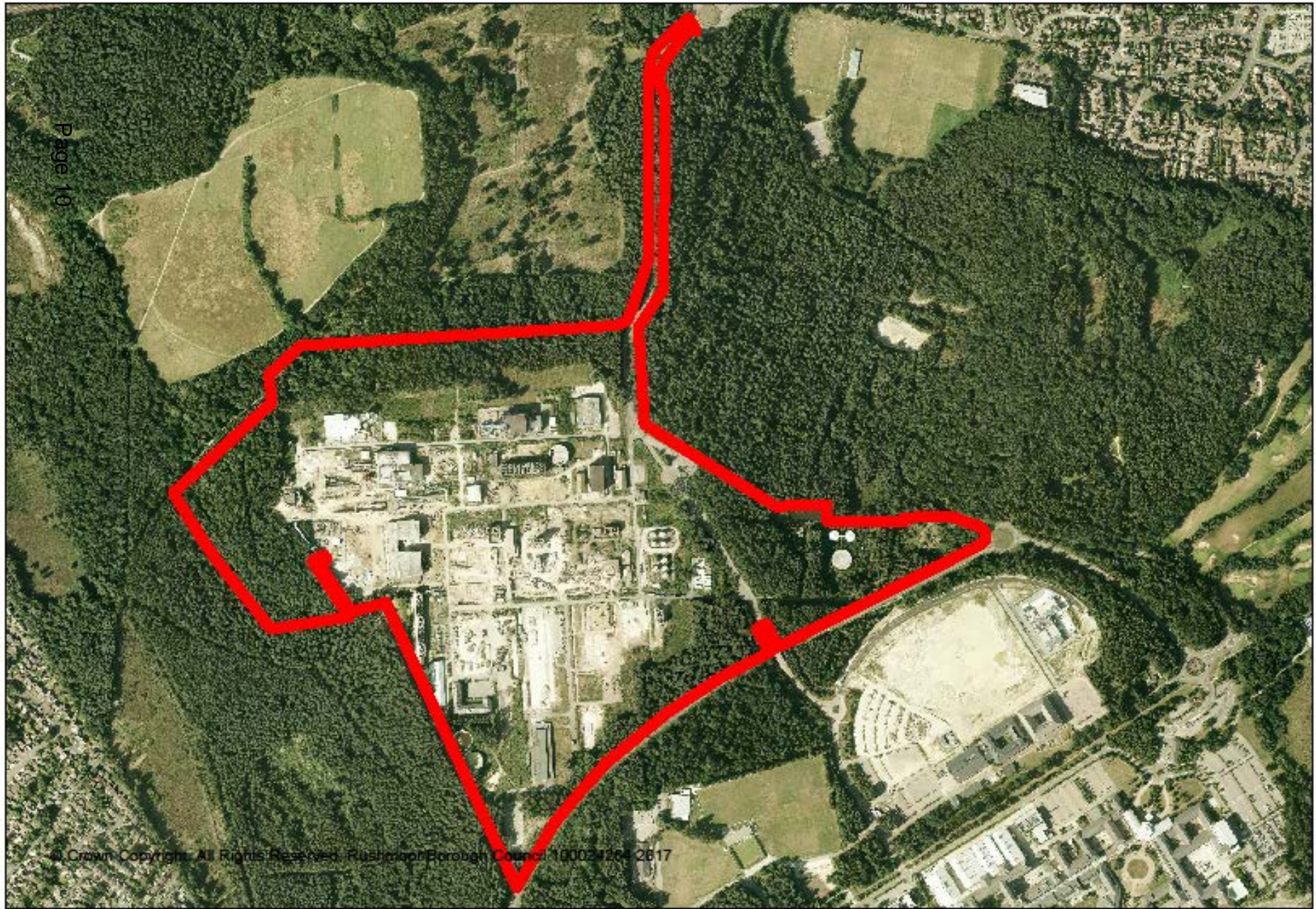
Author:
PLANNING

2511 w\w1 005+PLE





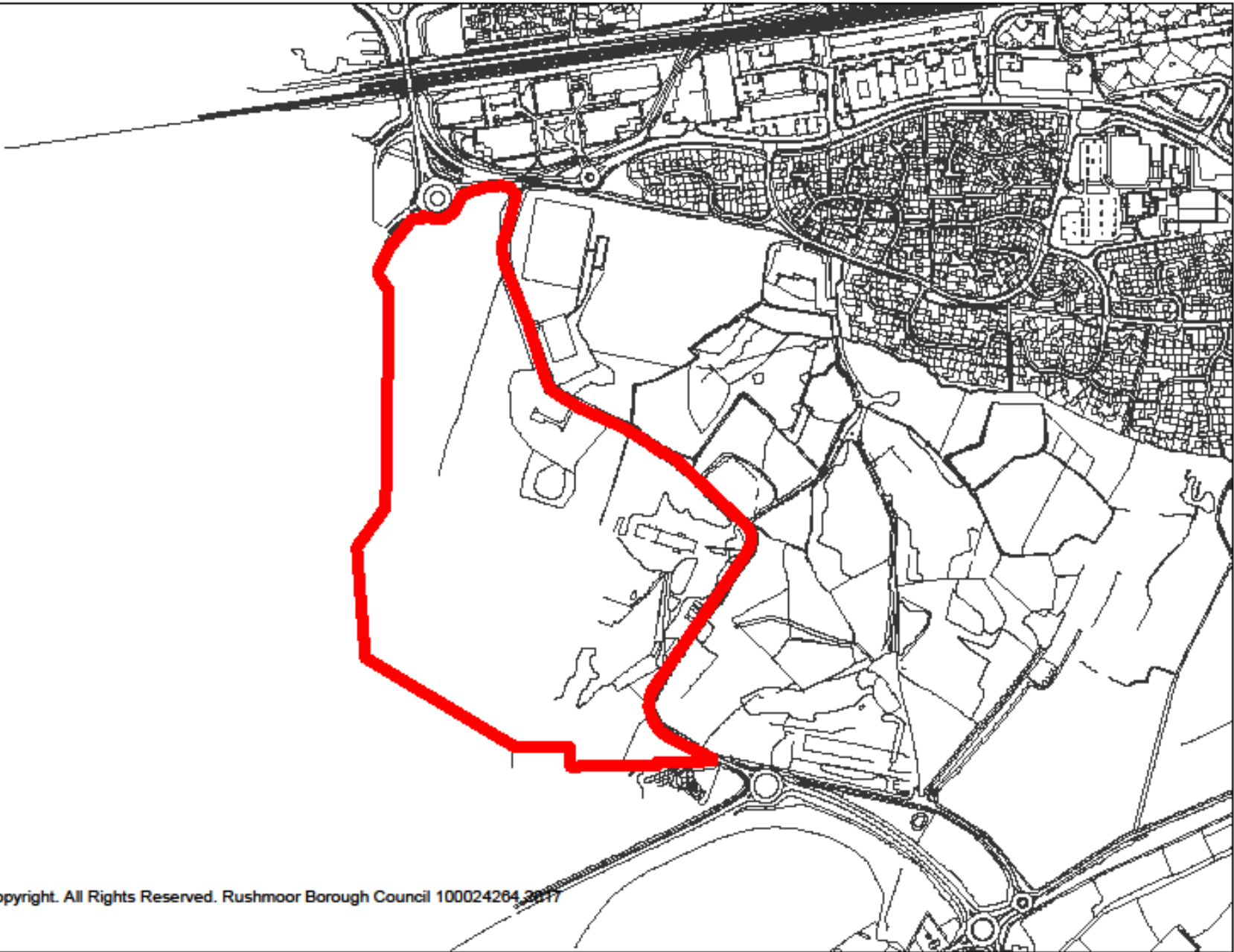




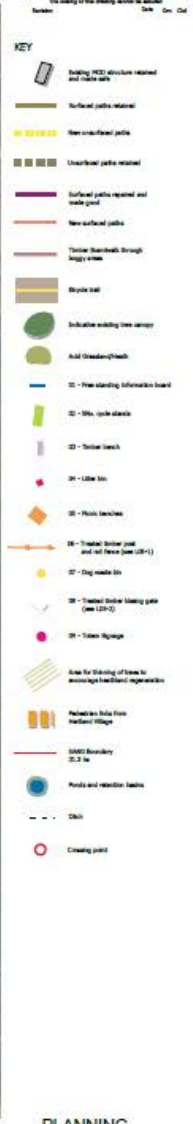
Development Management Committee

**Item 7 : 17/00515/FULPP &
17/00660/FULPP**

Land at Kennels Lane
Farnborough







10 - Information board
 Information board to provide details of the site and its facilities.

10 - Bicycle rack
 To provide a secure place for visitors to store their bicycles.

10 - Bench
 To provide a place for visitors to sit and enjoy the view.

10 - Bin
 To provide a place for visitors to dispose of their rubbish.

10 - Table
 To provide a place for visitors to sit and enjoy the view.

10 - Fencing
 To provide a secure boundary for the site.

10 - Signpost
 To provide a clear direction to the site.

10 - Dog waste bin
 To provide a place for visitors to dispose of their dog waste.

10 - Dog waste bin
 To provide a place for visitors to dispose of their dog waste.

10 - Dog waste bin
 To provide a place for visitors to dispose of their dog waste.

PLANNING

Kennels Lane SANG
 Plans
 Kennels Lane SANG
 Kennels Lane SANG

Date: 10.11.17
 Author: [Name]
 Project: Kennels Lane SANG
 Version: 1.0

BARTON WILLIAMS

Address: [Address]
 Phone: [Phone]
 Email: [Email]



46 no. Existing Parking Space

Vehicle gates to remain open at all times for unrestricted access

Page 15

Project: Kennels Lane SANG
Farmborough
Drawing Title: SANG Temporary Car Park General Arrangement
Scale: 1:200 (A4)
Date: 08.08.17
Project No: 26694
Drawing No: L06-13
Drawn by: HW
Checked by: AC
Revised by: -











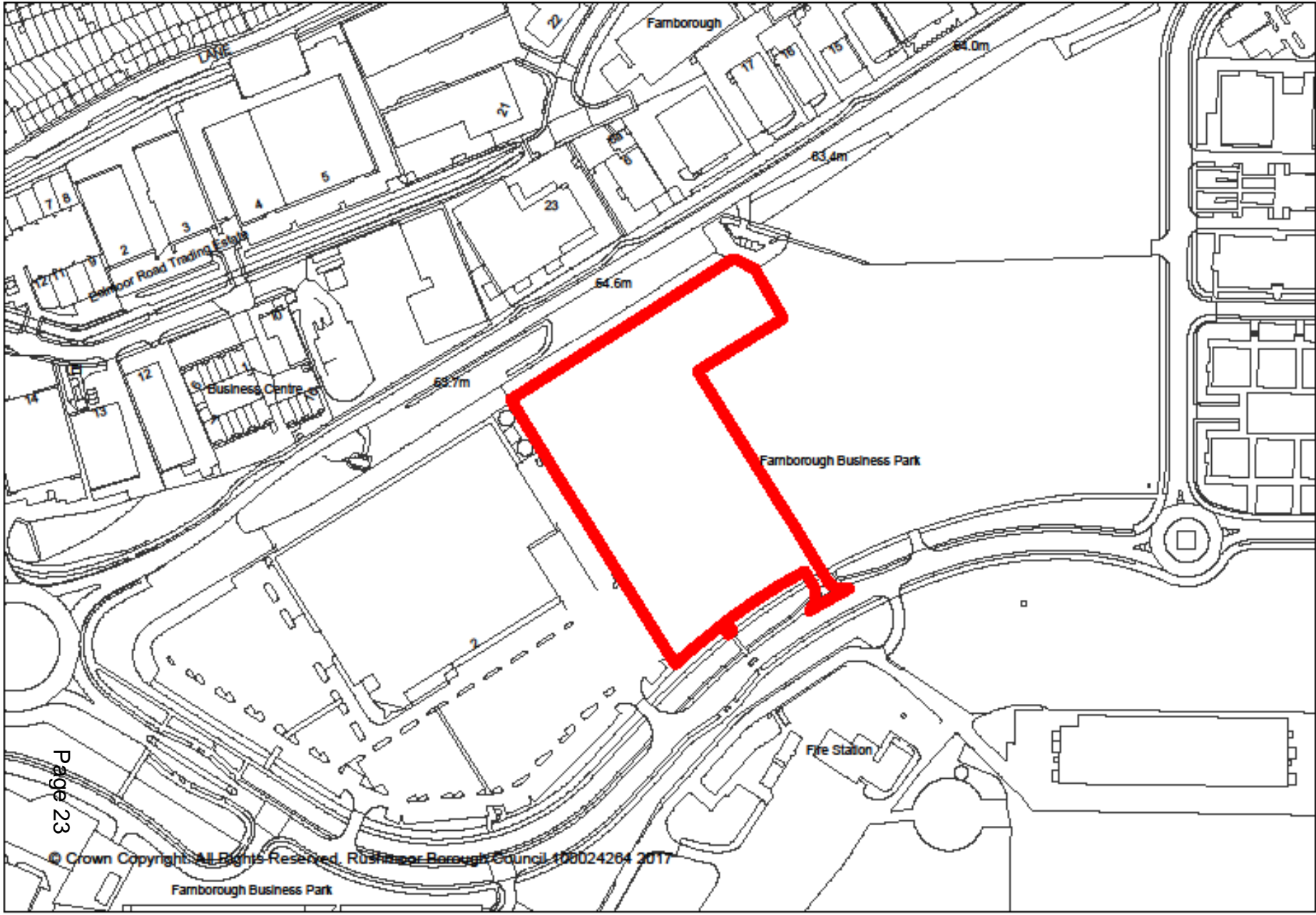


Development Management Committee

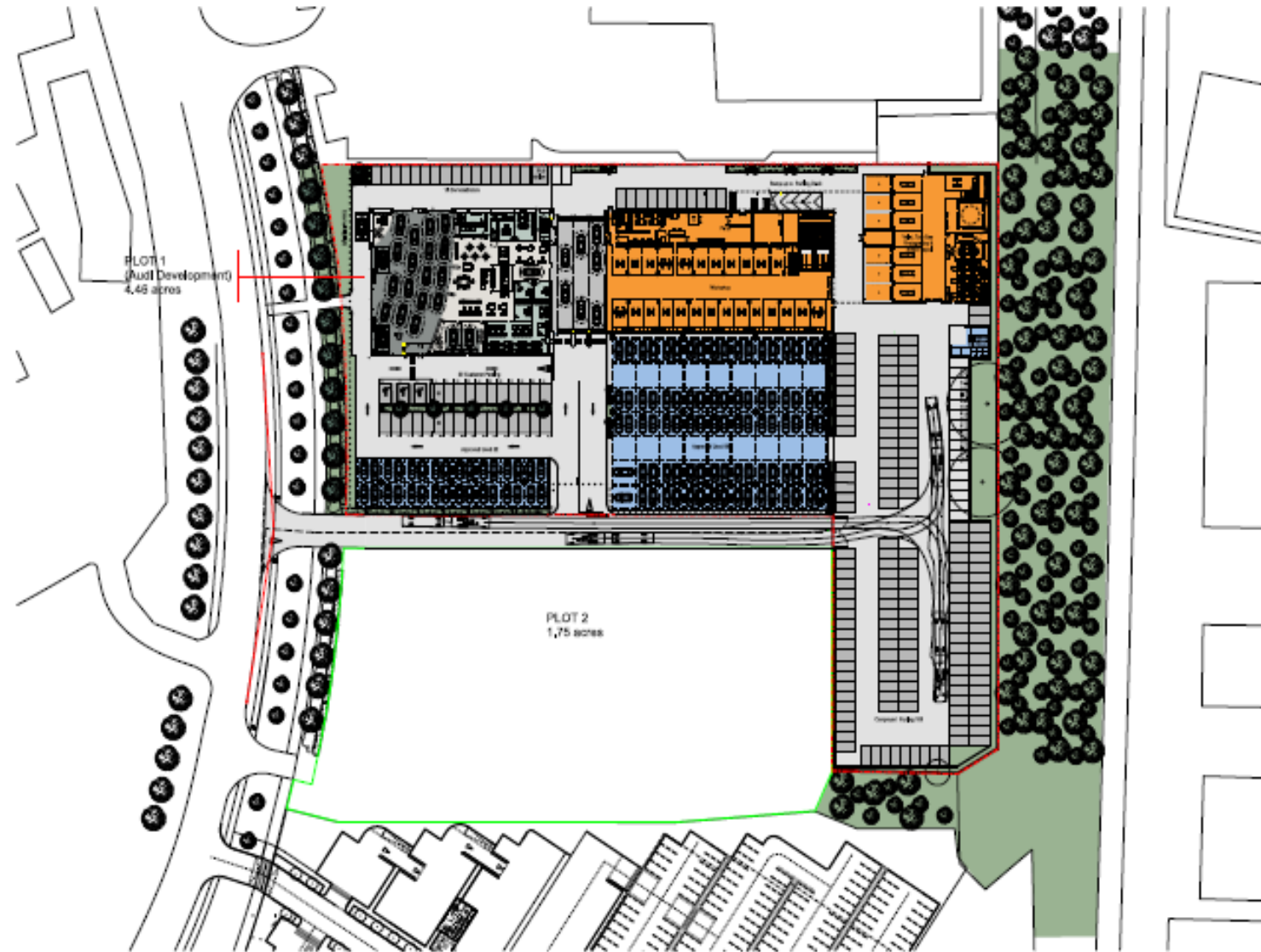
Item 8 : 17/00348/FULPP

Farnborough Business Park
Templer Avenue
Farnborough





Drawn by:	...
Checked by:	...
Approved by:	...
Date:	...
Scale:	...



Ordnance Survey, (c) Crown Copyright 2013. All rights reserved. Licence number 100020449
 0m 20m 40m 60m

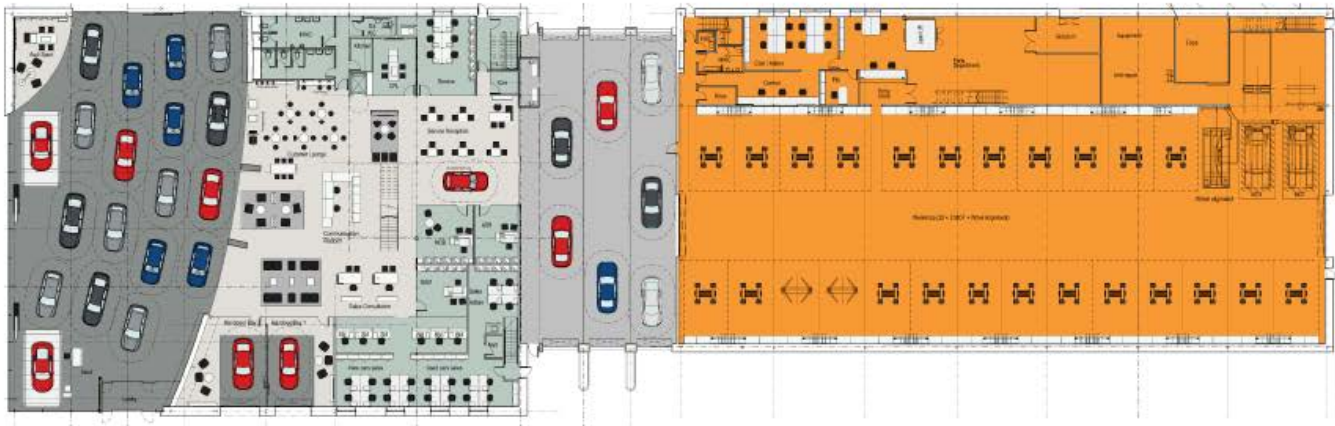
1	Proposed Site Plan	Yes	Yes
2	...	Yes	Yes
3	...	Yes	Yes
4	...	Yes	Yes
5	...	Yes	Yes
6	...	Yes	Yes
7	...	Yes	Yes
8	...	Yes	Yes
9	...	Yes	Yes
10	...	Yes	Yes
11	...	Yes	Yes
12	...	Yes	Yes
13	...	Yes	Yes
14	...	Yes	Yes
15	...	Yes	Yes
16	...	Yes	Yes
17	...	Yes	Yes
18	...	Yes	Yes
19	...	Yes	Yes
20	...	Yes	Yes
21	...	Yes	Yes
22	...	Yes	Yes
23	...	Yes	Yes
24	...	Yes	Yes
25	...	Yes	Yes
26	...	Yes	Yes
27	...	Yes	Yes
28	...	Yes	Yes
29	...	Yes	Yes
30	...	Yes	Yes
31	...	Yes	Yes
32	...	Yes	Yes
33	...	Yes	Yes
34	...	Yes	Yes
35	...	Yes	Yes
36	...	Yes	Yes
37	...	Yes	Yes
38	...	Yes	Yes
39	...	Yes	Yes
40	...	Yes	Yes
41	...	Yes	Yes
42	...	Yes	Yes
43	...	Yes	Yes
44	...	Yes	Yes
45	...	Yes	Yes
46	...	Yes	Yes
47	...	Yes	Yes
48	...	Yes	Yes
49	...	Yes	Yes
50	...	Yes	Yes
51	...	Yes	Yes
52	...	Yes	Yes
53	...	Yes	Yes
54	...	Yes	Yes
55	...	Yes	Yes
56	...	Yes	Yes
57	...	Yes	Yes
58	...	Yes	Yes
59	...	Yes	Yes
60	...	Yes	Yes
61	...	Yes	Yes
62	...	Yes	Yes
63	...	Yes	Yes
64	...	Yes	Yes
65	...	Yes	Yes
66	...	Yes	Yes
67	...	Yes	Yes
68	...	Yes	Yes
69	...	Yes	Yes
70	...	Yes	Yes
71	...	Yes	Yes
72	...	Yes	Yes
73	...	Yes	Yes
74	...	Yes	Yes
75	...	Yes	Yes
76	...	Yes	Yes
77	...	Yes	Yes
78	...	Yes	Yes
79	...	Yes	Yes
80	...	Yes	Yes
81	...	Yes	Yes
82	...	Yes	Yes
83	...	Yes	Yes
84	...	Yes	Yes
85	...	Yes	Yes
86	...	Yes	Yes
87	...	Yes	Yes
88	...	Yes	Yes
89	...	Yes	Yes
90	...	Yes	Yes
91	...	Yes	Yes
92	...	Yes	Yes
93	...	Yes	Yes
94	...	Yes	Yes
95	...	Yes	Yes
96	...	Yes	Yes
97	...	Yes	Yes
98	...	Yes	Yes
99	...	Yes	Yes
100	...	Yes	Yes

Lookers Aud
 Farnborough

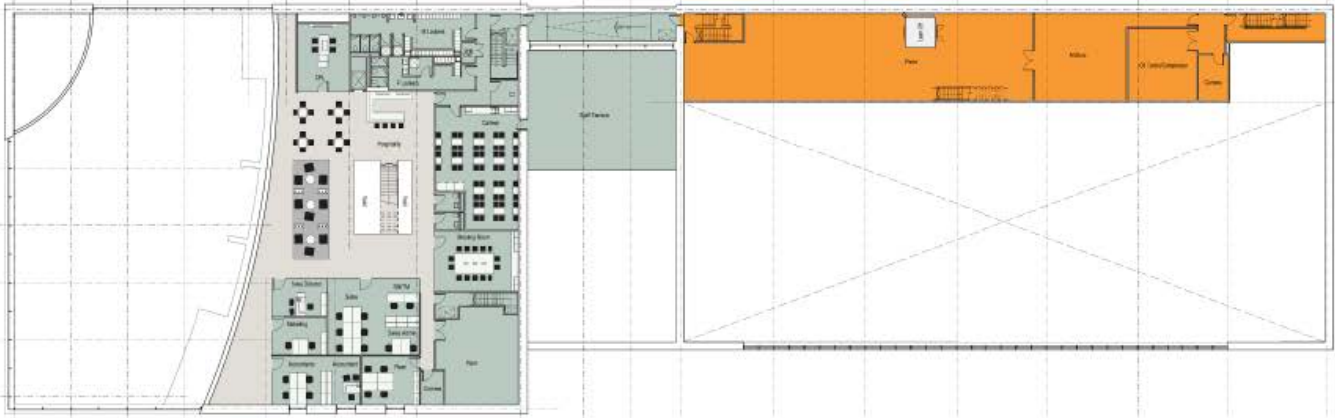
Proposed Site Plan

Scale: 1:100
 Date: 13/11/2013

TAYLOR DESIGN
 architects ltd



Ground Floor plan



First Floor plan



#2	Additional internal LPA equipment	0/01	20/10/17
#3	Additional external LPA equipment	0/01	20/10/17
#4	Additional external LPA equipment	0/01	20/10/17
#5	Additional external LPA equipment	0/01	20/10/17
#6	Additional external LPA equipment	0/01	20/10/17
#7	Additional external LPA equipment	0/01	20/10/17
#8	Additional external LPA equipment	0/01	20/10/17
#9	Additional external LPA equipment	0/01	20/10/17
#10	Additional external LPA equipment	0/01	20/10/17
#11	Additional external LPA equipment	0/01	20/10/17
#12	Additional external LPA equipment	0/01	20/10/17
#13	Additional external LPA equipment	0/01	20/10/17
#14	Additional external LPA equipment	0/01	20/10/17
#15	Additional external LPA equipment	0/01	20/10/17
#16	Additional external LPA equipment	0/01	20/10/17
#17	Additional external LPA equipment	0/01	20/10/17
#18	Additional external LPA equipment	0/01	20/10/17
#19	Additional external LPA equipment	0/01	20/10/17
#20	Additional external LPA equipment	0/01	20/10/17

Do not scale this drawing
 All dimensions are in millimetres
 unless otherwise stated
 This drawing is copyright and is to be used in this way only

Project	
Lookers Audi Farnborough	
Title	
Proposed Floor Plans	
Job No.	0598
Drawing No.	201
Drawn by	0/01
Scale	1:500
Date	
PLANNING	
Date	











Development Management Committee

13th September 2017

Development Management Committee

**Enforcement and possible
unauthorised development:
16/00192/GENWRK**

29 Wellington St, Aldershot



This page is intentionally left blank